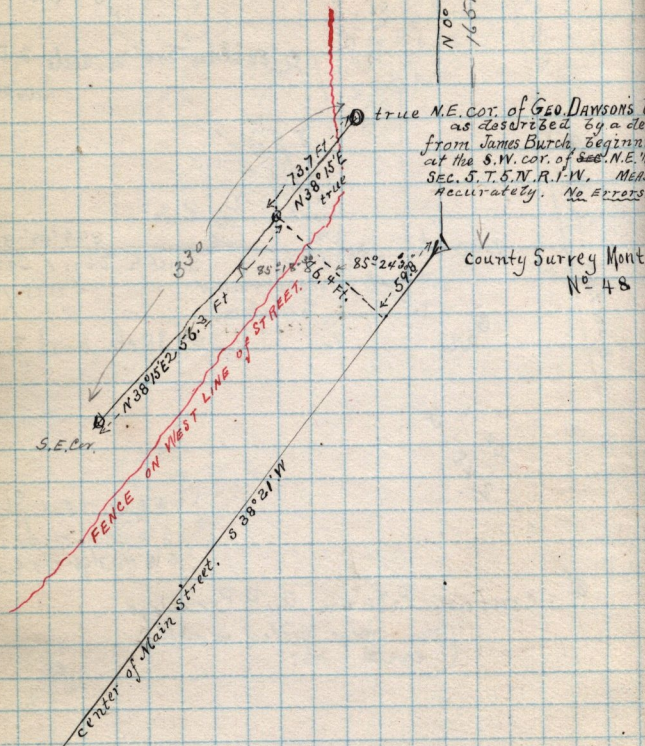


N 0° 58' E  
1657.8 ft — to Sec. line



true N.E. COR. of GEO. DAWSONS land  
as described by a deed  
from James Burch, beginning  
at the S.W. cor. of Sec. N.E. 1/4  
SEC. 5, T. 5, N. R. 1, W. MEASUR  
accurately. No Errors.

County Survey Mont  
No. 48

G. NELSON SMITH transit, A. Postan and W. P. Jones, Chairman  
Surveyed  
August 30-31 et 1889